

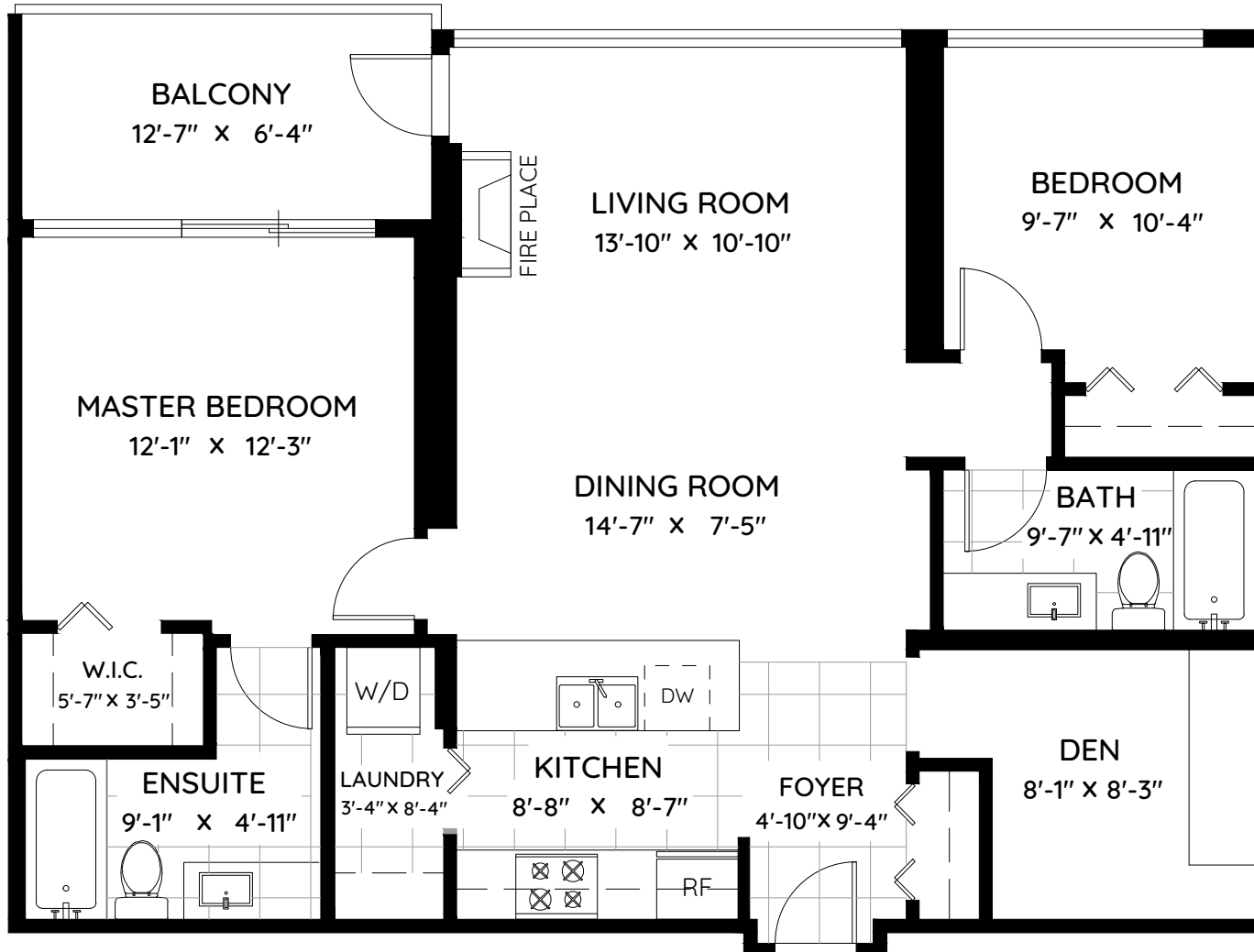
704 - 39 SIXTH STREET

NEW WESTMINSTER, BC

LIVING AREA 1,026 SQ.FT.

BALCONY 83 SQ.FT.

CEILING HEIGHT 8'-0"



0 ft 3 ft 5 ft



The floor plan and the measurements are approximate and are to be used for advertising usage only. Not suitable for architectural or construction. E&O Insured