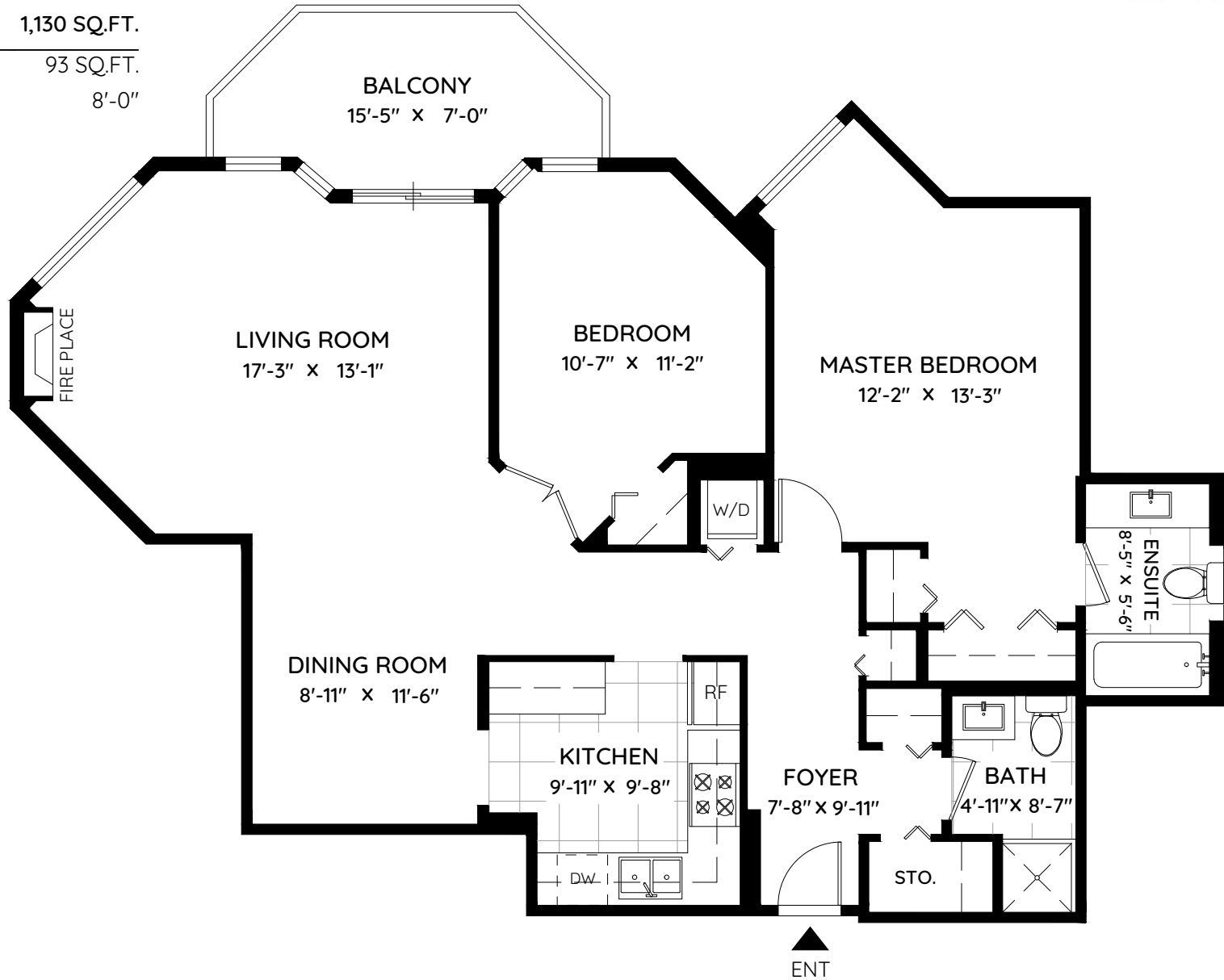


604 - 1135 QUAYSIDE DRIVE

NEW WESTMINSTER, BC

LIVING AREA 1,130 SQ.FT.
BALCONY 93 SQ.FT.
CEILING HEIGHT 8'-0"



0 ft 3 ft 5 ft



The floor plan and the measurements are approximate and are to be used for advertising usage only.
Not suitable for architectural or construction. E&O Insured