

#87-21138 88 Avenue,
Langley, B.C.

YOUNG

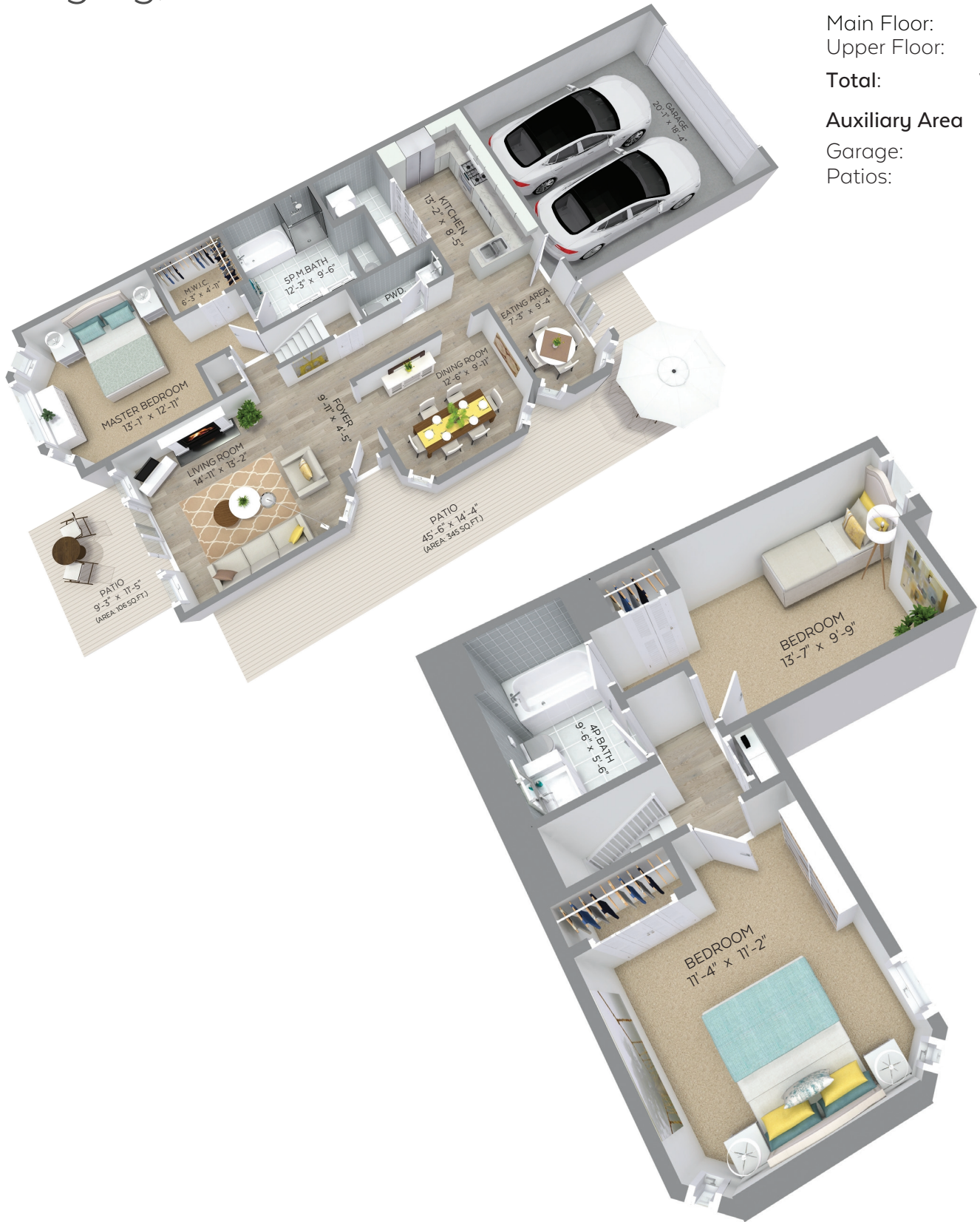
REAL ESTATE GROUP
INFO@ALYOUNG.CA | 604.533.3491

Main Floor: 1,149 sq.ft.
Upper Floor: 472 sq.ft.

Total: 1,621 sq.ft.

Auxiliary Area

Garage: 397 sq.ft.
Patis: 451 sq.ft.



The floor plan is not suitable for architectural/construction and is covered under E&O. © Excelsior Measuring Inc. 2020. All rights reserved for Excelsior Measuring Inc. Users shall not publish and distribute such material (in whole or in part) and/or incorporate it in other works in any form.