

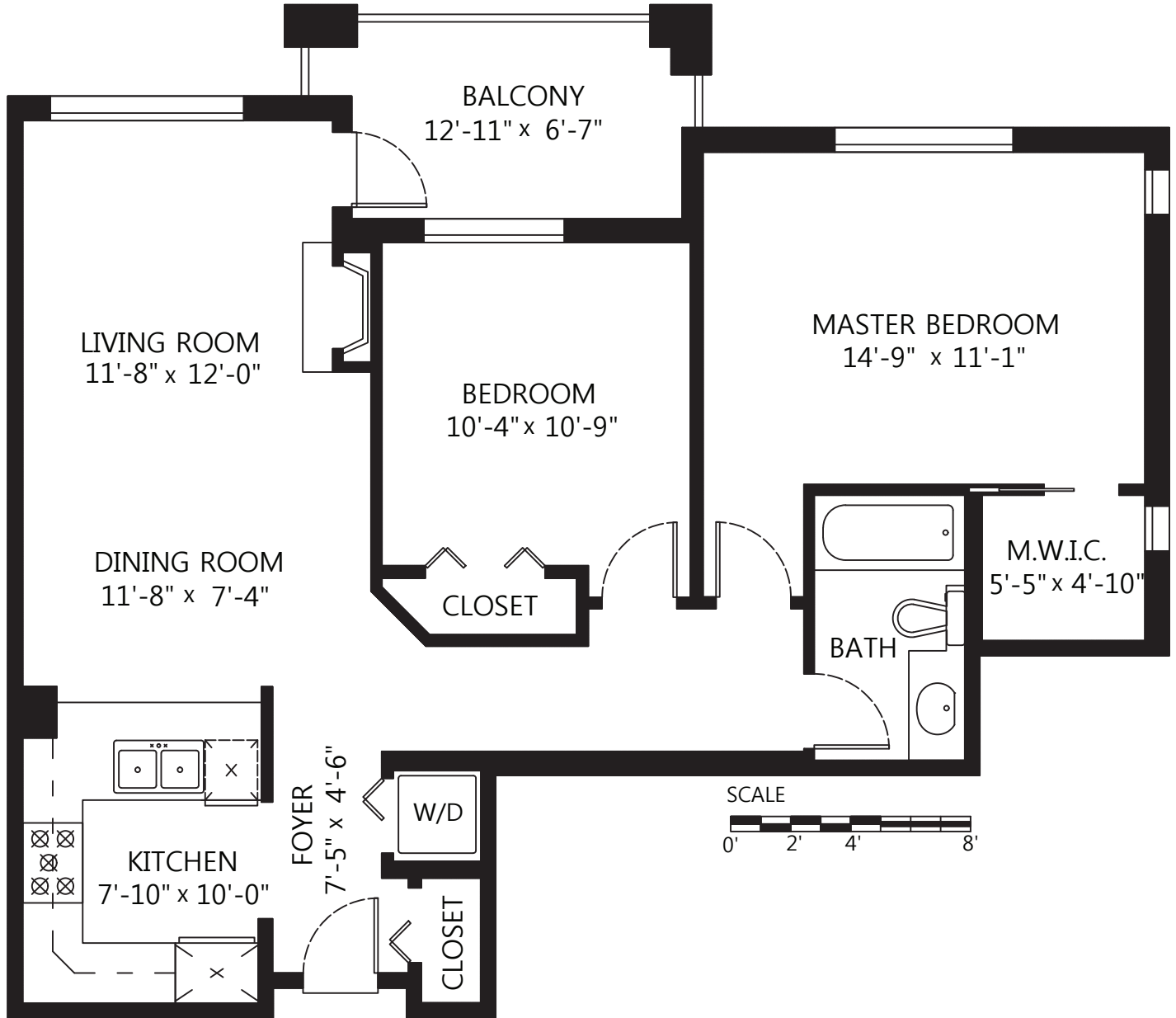


TEAM CINDYGERING

PERSONAL REAL ESTATE CORPORATION
604.779.1292 - Cindy@TeamCindyGering.com

**#302-625 Park Crescent,
New Westminster, B.C.**

Main Floor: 918 sq.ft.
Balcony: 82 sq.ft.



*The floor plan is not suitable for architectural/construction,
square footage-method ANSI Z765 used & is covered under E&O*

