



# TEAM CINDY GERING

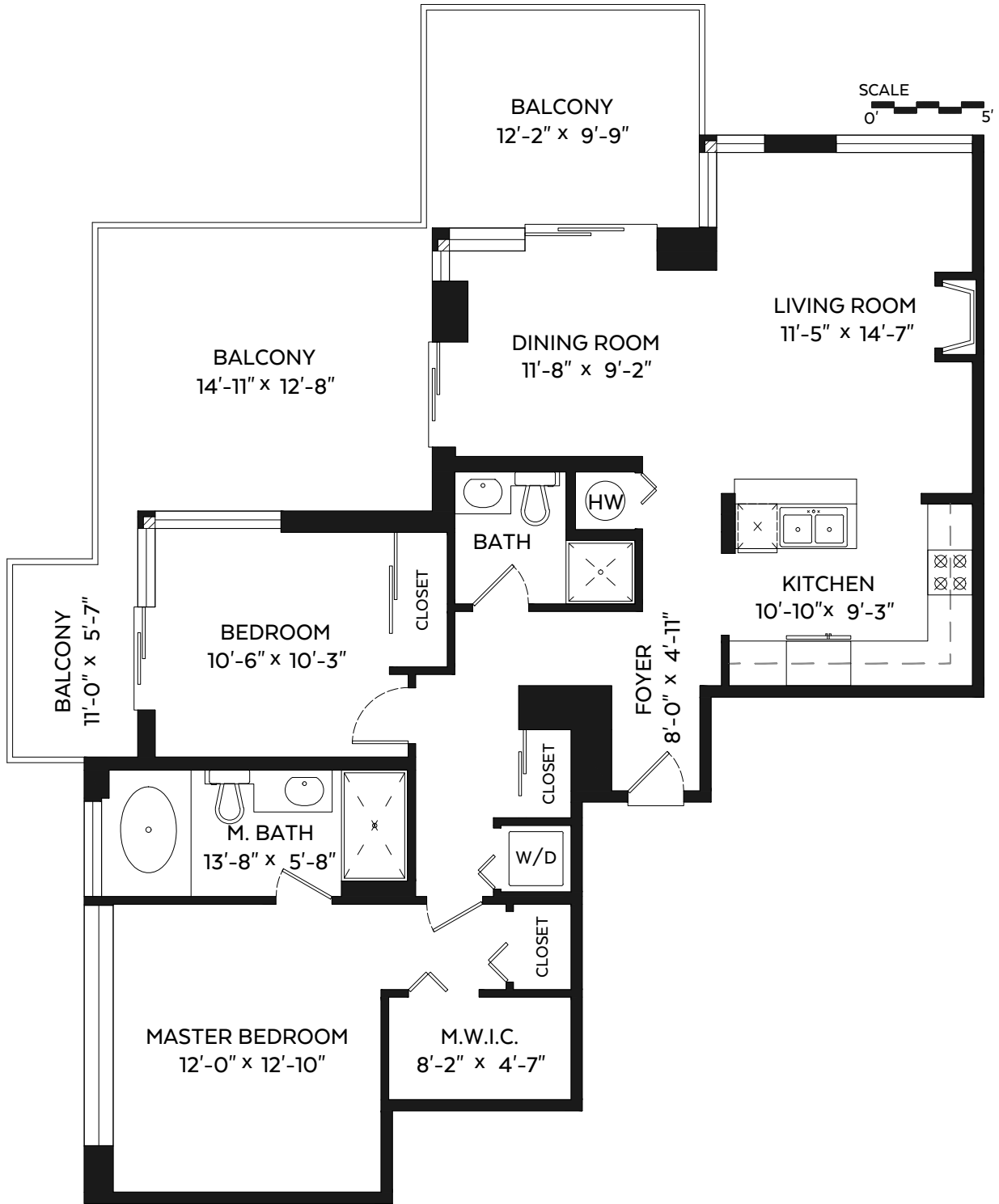
PERSONAL REAL ESTATE CORPORATION

604.779.1292 - Cindy@TeamCindyGering.com

#2101 - 15 E Royal Avenue,  
New Westminster, B.C.

Main Floor: 1,167 sq.ft.

Balcony: 378 sq.ft.



The floor plan is not suitable for architectural/construction, square footage-method ANSI Z765 used & is covered under E&O

